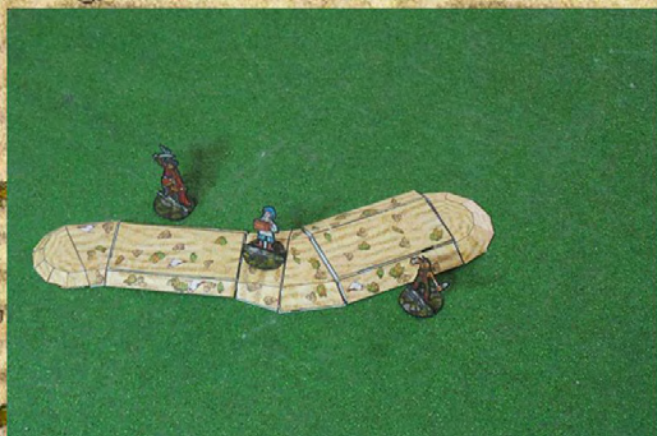
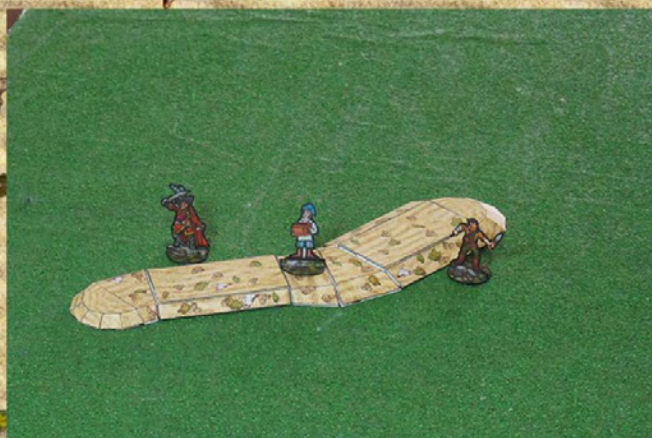
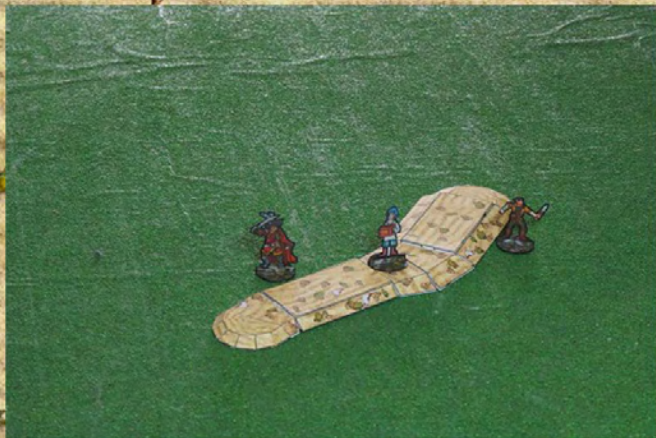


# TINKERING TOM

Cardboard Warriors Forum  
Hoard # 131 People of the Sand  
Sand Dunes



A variety of patterns to allow custom sand dunes/sand bars to be constructed. The pictures above showcase just a small assortment of the forms available. These utilize 1/4" high by 1.5" wide sections, showcased are rounded ends, platforms with changeable top tiles and steep or gentle sloped sides, 30 degree turn junctions, and junction pieces to change from steep sloped to gentle sloped sides. You will also find 1/2" high sections, 2" wide sections, junctions to change from 1/4" height to 1/2" height, junctions to change from 1.5" wide to 2" wide and 45 degree turns.

Miniatures not included, samples provided by Mayhem in Paper,  
One Monk miniatures and Brave Adventures

You can follow further projects at <https://www.facebook.com/tinkeringtom>

© 2015 Thomas Frank, Jr  
Tinkering Tom Papercraft Design  
permission granted for personal  
use and non-profit sharing



The Bases are designed to have interchangeable sides and tops, that way you can use the sloped section with the same length central section, even if it is 3", 2" or 1.5" wide, and even have sides with different degree of slopes.

Central section with 2 sloped side sections with different textures ( stone and coral)



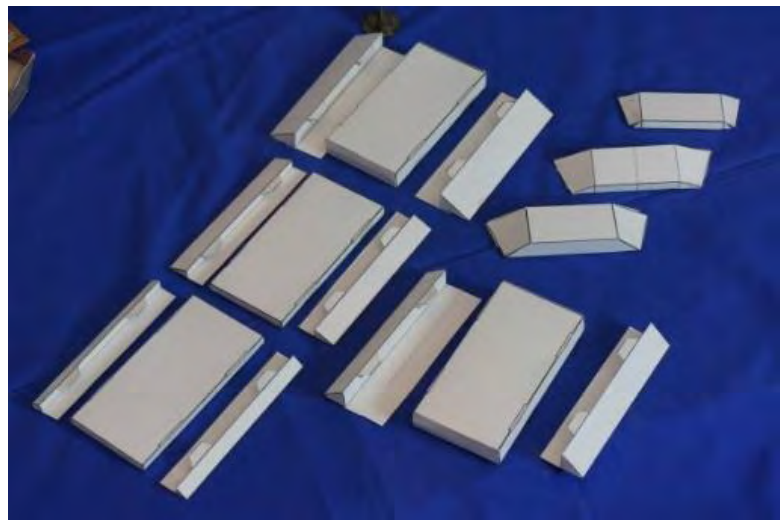
Showing how the central section slots together with the side sections



2" wide by 4" long breaker section with stone tile top, and one stone and one coral side section.



Piece Showing different parts and Intersections:



these next pictures show parts assembled, from left to right is a 2"x4", 1/4 Height section with steep sloped sides, a 1/4" height steep to gentle slope junction, a 2"x4" 1/4" height section with gentle slope sides, a 1/4" to 1/2" height, gentle slope junction, a 2"x4", 1/2" height section with gentle sloped sides, a 1/2" height gentle sloped to steep sloped junction, and at far right a 2"x4", 1/2" height section with steep sloped side pieces.





Back row is some Mini's for comparison. these are all full 28mm scale. Next down is the 2 sloped sides, middle is the curved end and top tile, and the bottom is the internal platform support structure:



Fold the platform internal structure to shape and attach the 2 side pieces:





A collection of miniature models on a green base. In the center is a small, light-colored wooden cart with two large wheels and two long handles. To the left of the cart is a small, dark-colored horse. To the right of the cart is a small, light-colored house with a gabled roof. In the foreground, there is a small, light-colored house with a gabled roof. Several small figures are scattered around the models. One figure is on the left, wearing a red tunic and a blue hat. Another figure is on the right, wearing a blue tunic and a blue hat. A third figure is on the far right, wearing a red tunic and a blue hat. A fourth figure is on the far left, wearing a red tunic and a blue hat.

